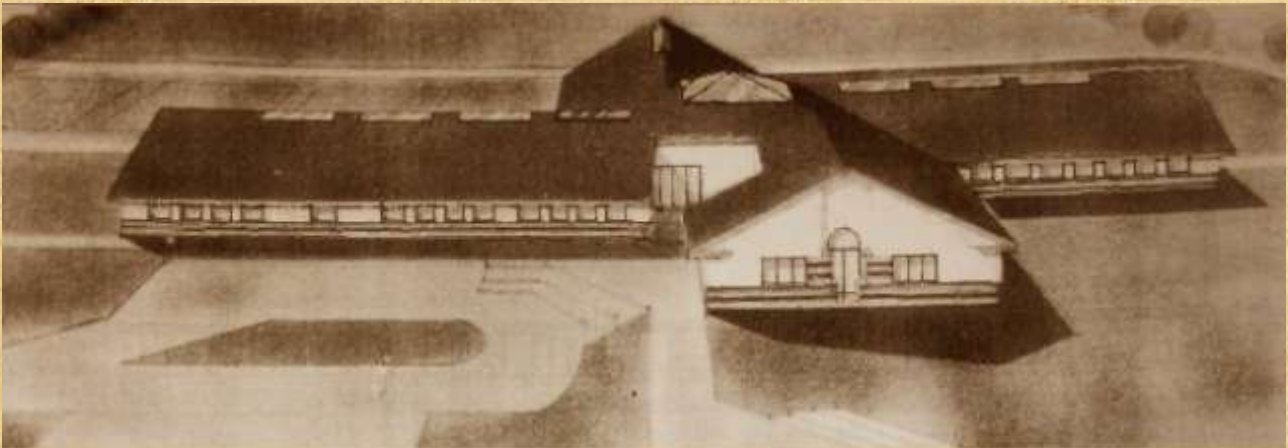


**Below is a copy of the original parish newsletter announcing the  
“New School” in February 1987**

## Pobalcholáiste Choilm



### CURRICULUM

The College is uniquely placed to provide the widest possible curriculum for its students. The pursuit of academic excellence will go hand in hand with structures and programmes that will help develop each student to his or her full potential. Parents can feel confident that everything will be done to ensure their children reach their full potential in an ordered and happy environment.

### EDUCATION FOR LESURE

All students of St. Colm's will be encouraged to participate in sporting, musical, theatrical and artistic activities. It is envisaged that school musicals, bands, orchestra and a wide variety of sporting activities will be organised from the outset to ensure the fullest possible participation of all students in worthwhile leisure pursuits.

### GAEILGE SA CHOLAISTE

Ma bhíonn glaoch air cuirfear sraith amháin ar bun sa cholaiste chun freastal orthu síúd ar mian leo oideachas trí mheán na Gaeilge a fháil. Eagrofar Ceilítí, Diospoireachtaí agus dramaí go rialta don scoil iomlán agus deanfar iarracht ar chuid mhaith de ghnó an choláiste a dheanamh trí mheán na Gaeilge. Deanfar gach iarracht ár dteanga agus culture na tíre a chur chun chinn.

### IN BRIEF, ST. COLM'S OFFERS: -

- A curriculum that will be planned to meet the needs of your children in the conditions of the 1990's.
- A College with a projected enrolment of 400 and physical conditions second to none.
- A Management structure that is truly local and responsive to local needs.
- The guaranteed enthusiasm, commitment and professionalism of a staff and management team determined to make the college an outstanding success.
- A system of education that incorporates the best of the various traditions in Irish education.
- A truly caring school community that will cherish and value every individual involved.
- A discipline system that is firm, consistent and effective.
- A college that is fully aware of its commitment to our ever expanding community.
- A school community that will foster, nurture and support the religious faith and values of everyone, associated with it